

Document downloaded from the institutional repository of the University of Alcalá: <http://dspace.uah.es/dspace/>

This is a postprint version of the following published document:

Andivia, E. et al., 2019. Rooting big and deep rapidly: the ecological roots of pine species distribution in southern Europe. *Trees*, 33(1), pp.293–303.

Available at <http://dx.doi.org/10.1007/s00468-018-1777-x>

© 2018 Springer Verlag

Universidad
de Alcalá

(Article begins on next page)



This work is licensed under a

Creative Commons Attribution-NonCommercial-NoDerivatives
4.0 International License.

1 **Rooting big and deep rapidly: the ecological roots of pine species distribution**
2 **in southern Europe**

3

4 Enrique Andivia¹, Paolo Zuccarini^{2,3}, Beatriz Grau², Felicidad de Herralde², Pedro Villar-
5 Salvador¹, Robert Savé^{2,*}

6

7 1. Forest Ecology and Restoration Group, Departamento de Ciencias de la Vida, Universidad de
8 Alcalá, Apdo. 20, Alcalá de Henares, Madrid 28805, Spain

9 2. Plant Science Area –IRTA– Institut de Recerca i Tecnologia Agroalimentaries, Torre
10 Marimon, C-59, Km 12.1, Caldes de Montbui, Barcelona 08140, Spain

11 3. CREAM, Campus de Bellaterra, Universitat Autònoma de Barcelona, Cerdanyola del Vallès,
12 Barcelona 08193, Spain

13

14 * **Author for correspondence:** Robert Savé, Plant Science Area –IRTA– Institut de Recerca i
15 Tecnologia Agroalimentaries, Torre Marimon, C-59, Km 12.1, Caldes de Montbui, Barcelona
16 08140, Spain. Tel: +34 93 4674040, ext. 1326. Email: robert.save@irta.cat

17

18 Emails of other authors: EA (e.andivia@gmail.com), PZ (p.zuccarini@creaf.uab.cat), BG
19 (beatriz.grau.s@gmail.com), FdeH (felicidad.deherralde@irta.cat),
20 PVS (pedro.villar@uah.es).

21

22 ORCID number: EA (0000-0002-9096-3294)

23

24 **Author Contribution Statement:** RS, FdH and PV designed the study, experiment setup and
25 data collection was made by BG, FdH and PZ, data was analyzed by EA and PZ, first draft
26 was written by EA and PV, final edition was done by all authors.

27

28 **Acknowledgments**

29 Research was supported by the projects Life MEDACC, AGL2011-24296 ECOLPIN
30 (MICIIN), CGL2014-53308-P (SERAVI), Centres CERCA of Generalitat de Catalunya and the
31 network REMEDINAL 3 (S2013/MAE-2719) of the CAM. EA was supported by postdoctoral
32 grant “Ayudas para contratos para la formación postdoctoral” (FPDI-2013-15573) from the
33 Spanish Government. We thank Laia Serra and Christian Morales for their technical assistance
34 and Verónica Cruz-Alonso for figure preparation.

35

36 **Conflict of Interest**

37 The authors declare that they have no conflict of interest.

38

39 **Data availability**

40 The datasets generated during and/or analysed during the current study are available from the
41 corresponding author on reasonable request.

42

43 **Abstract**

44 Root properties can influence plant drought resistance, and consequently plant species
45 distribution. Root structure strongly varies across biomes partly as a result of phylogeny.
46 However, whether the spatial distribution of phylogenetically close plant species is linked to
47 differences in root properties remains unclear. We examined whether root properties mediate
48 the strong correlation between summer drought intensity and the spatial segregation of pine
49 species native to southern Europe. For this, we compared the seedling root growth and structure
50 of five ecologically distinct pine species grown in 360L rhizotrons for 19 months under typical
51 hot and dry Mediterranean conditions. We studied the mountain and boreo-alpine pines *Pinus*
52 *sylvestris* and *Pinus nigra*, and the Mediterranean pines *Pinus pinaster*, *Pinus pinea* and *Pinus*
53 *halepensis*. Mediterranean pines formed deep roots faster than mountain pines, their shoots and
54 roots grew faster and had higher root growth, especially *P. halepensis*, at low air temperature.
55 By the end of the study, Mediterranean pines had larger root systems than mountain pines.
56 Neither distribution of root mass with depth nor root-to-shoot mass ratio varied significantly
57 among species. Across species, minimal annual rainfall to which species are exposed in their
58 range related negatively to root growth but positively to specific root length and the time needed
59 for roots to reach a depth of 40 cm. This study highlights the importance of root growth as a
60 driver of pine distribution in southern Europe and suggests that rapidly producing a large, deep
61 root system may be a key attribute for pines to colonize dry Mediterranean locations.

62

63 **Keywords:** Drought resistance; *Pinus*; Rhizotron; Root growth; Root structure; Rooting
64 depth; Specific root length

65

66 **Key message:** The rapid production of a large, deep root system during seedling
67 establishment is critical for pines to colonize dry Mediterranean locations

68 **1. Introduction**

69 Water stress constrains plant life in many terrestrial ecosystems (Vicente-Serrano et al. 2013).
70 Plants show a wide variety of adaptations to survive in dry ecosystems (Levitt 1980; Chaves et
71 al. 2003; Brodribb et al. 2014). Roots vary widely in structure among plant species, and several
72 root properties have been related to drought resistance of plants (Padilla and Pugnaire 2007;
73 Alsina et al. 2011; Comas et al. 2013; Brunner et al. 2015). The size of the root system and
74 rooting depth determine the plant's ability to access deep soil moisture reserves during dry
75 periods (Schulze et al. 1996). Across species, the size of the root system, rooting depth and root
76 hydraulic conductance increase with the size of growth forms (Canadell et al. 1996; Schenk and
77 Jackson 2002; De Herralde et al. 2010). However, for a specific growth form, species inhabiting
78 water-limited environments tend to have deeper roots than their mesic counterparts (Jackson et
79 al. 1996).

80 The proportion of mass allocated to roots has also been related to plant drought
81 resistance. The proportion of root mass relative to either shoot mass (R/S) or entire plant mass
82 (root mass fraction, RMF) are indicators of the potential balance between water uptake and
83 evaporative capacity of a plant (Grossnickle 2012). Globally, R/S (Mokany et al. 2006), RMF
84 (Poorter et al. 2012b) and the relative distribution of root mass in depth (Schenk and Jackson
85 2002) usually increase with aridity. In addition, plants species differ substantially in fine root
86 production (Ostonen et al. 2007; Valverde-Barrantes et al. 2017). Fine root growth is often
87 studied using the proxy variable of specific root length (SRL), defined as the length of roots per
88 root mass unit (Ostonen et al. 2007). High-SRL root systems have a large root surface and
89 consequently high capacity to take up soil resources (Comas et al. 2013). In a global review of
90 studies of fine-root traits, SRL was greater in plants from cold and temperate climatic areas
91 than in plants from arid and tropical areas (Freschet et al. 2017). Fast growing woody plants,

92 which have high nutrient demand, grow more high-SRL roots than slow growing plants (Reich
93 et al. 1998; Comas and Eissenstat 2004; Hernández et al. 2010).

94 The seedling stage is a major bottleneck in the life history of plants and consequently in
95 population dynamics (Pulido et al. 2010). Rooting depth determines the capacity of seedlings
96 to access deep soil layers (Padilla and Pugnaire 2007), which usually hold stable water reserves
97 during the dry season (Brum et al. 2017). This fact likely explains why the ability of seedlings
98 in seasonal dry climates to survive their first dry season depends on root system size and rooting
99 depth (Grossnickle 2005; Padilla and Pugnaire 2007; Villar-Salvador et al. 2012). Plants can
100 achieve a deep and extensive root system either by starting to grow early in the wet season (De
101 Luis et al. 2008) and/or by growing rapidly during the wet season (Holmgren et al. 2006; Stella
102 and Battles 2010). Root growth in the wet season depends on soil and air temperature. Response
103 of root growth to temperature varies among species (Lyr 1996; Pregitzer et al. 2000). Most plant
104 species slow root growth greatly when soil temperature is $< 10\text{ }^{\circ}\text{C}$ and root growth cessation
105 occurs at $2\text{-}6^{\circ}\text{C}$ (Alvarez-Uria and Körner 2007). Species differences in the response of root
106 growth to temperature seems to be related to the temperature to which species are exposed in
107 their range (Lyr 1996).

108 The spatial segregation of native pine species in southern Europe is correlated with
109 summer drought and winter temperature (Barbero et al. 1998). *Pinus nigra* J.F. Arnold and *P.*
110 *sylvestris* L. (hereafter referred to as mountain and boreo-alpine pines) inhabit cold winter sites
111 in the high mountains of southern Europe, where rainfall is high and summer drought is mild
112 and short. At these locations, cold is the main limitation for plant life (Barbero et al. 1998). In
113 contrast, *Pinus halepensis* Mill., *Pinus pinaster* Ait., and *Pinus pinea* L. (hereafter referred to
114 as Mediterranean pines) thrive in low- and mid-altitude locations in a typical Mediterranean
115 climate, where winter is mild-to-cool and humid, while the summer is hot and dry (Barbero et
116 al. 1998). At these sites, summer water stress is the main limiting factor for plant life (Mitrakos

117 1980). The spatial segregation of these pine species can be explained in part by their capacity
118 to withstand frost events. *Pinus halepensis*, *P. pinea* and to a lesser extent *P. pinaster* are less
119 frost-tolerant than the high-mountain pines *P. sylvestris* and *P. nigra* (Climent et al. 2009;
120 Fernández et al. 2017; Toca et al. 2017). However, the fact that *P. sylvestris* and *P. nigra* do
121 not occur at low-altitude locations where summers are dry and hot could be explained by a
122 lower capacity to survive water stress than Mediterranean pines in the early life stages (Salazar-
123 Tortosa et al. 2018).

124 The objective of this study was to compare the growth and structure of root systems of
125 five ecologically distinct pine species native to the Iberian Peninsula (*P. sylvestris*, *P. nigra*, *P.*
126 *pinaster*, *P. pinea* and *P. halepensis*) under lowland Mediterranean conditions. For this, we
127 grew seedlings of these pine species in a common garden experiment simulating the low
128 precipitation and high temperature regime typical of low- and mid-altitude Mediterranean
129 location. Plants were grown in 360-L rhizotrons to avoid small rooting volume constraints
130 (Poorter et al. 2012a), and we analyzed the root dynamics and structure for 19 months. We
131 hypothesized that Mediterranean pines will grow faster a larger and deeper root system,
132 showing higher SRL than mountain and boreo-alpine pines under these experimental
133 conditions. This study will contribute to explain why mountain and boreo-alpine pines species
134 fail to colonize low altitude Mediterranean environments.

135

136 **2. Material and methods**

137 **2.1 Experimental setup and plant growth**

138 Seeds of the five pine species were collected from populations in the southern part of the Iberian
139 Range, eastern Spain (see Table S1 for locations and their environmental details). This region
140 covers around 8500 km² and natural populations of all studied species segregate along an
141 altitudinal gradient from 650 to 2050 m a.s.l. (Blanco et al. 1998). Seeds were seeded in

142 February 2012 and seedlings were cultivated in trays (190/300-45, Plasnor, Spain) of 300 ml.
143 Growing medium was fertilized peat (White 420 F6, Kekkilä, Finland) containing 0.8-1 kg/m³
144 of slow-release fertilizer NPK 16-10-20. Seedlings were initially grown in a greenhouse of the
145 Centro Nacional de Recursos Genéticos Forestales “El Serranillo” (Guadalajara, Spain) until
146 late March 2012, then transported to the IRTA in Caldes de Montbui (Barcelona, Spain), where
147 the rest of the study was performed. From late March to early June 2012, seedlings were kept
148 inside a greenhouse and periodically watered until transplanted to rhizotrons.

149 In early June 2012, six four-month-old seedlings per species were transplanted into 30
150 rhizotrons (1 seedling per rhizotron; rhizotron dimensions were height: 1.2 m, width: 0.5 m and
151 depth: 0.6 m) filled with washed river sand. The side and rear walls of the rhizotrons were made
152 of galvanized iron sheets, while the front wall was glass, which was covered by reflective plastic
153 to avoid radiation (light and temperature) at root level. The rhizotrons were placed inside an
154 open greenhouse tunnel, which reduced ambient photosynthetic photon flux density by 30%.
155 At the time of transplanting seedling height and diameter (\pm SE) were: 11.4 \pm 0.7 cm and 2.3 \pm
156 0.1 mm for *P. halepensis*; 15.9 \pm 0.2 cm and 3.1 \pm 0.2 mm for *P. pinea*; 14.7 \pm 1.3 cm and 2.8
157 \pm 0.1 mm for *P. pinaster*; 8.7 \pm 0.2 cm and 2.1 \pm 0.1 mm for *P. nigra*; and 7.4 \pm 0.2 cm and 2.5
158 \pm 0.1 mm for *P. sylvestris*, respectively. Seedlings were water-supplied with approximately the
159 average rainfall rate of Caldes de Montbui (altitude: 203 m a.s.l.). This location has a typical
160 Mediterranean climate with a mean temperature of 15.5 °C and a mean annual rainfall of 633
161 mm. Water was supplied daily during the first month and then every 2-3 days thereafter. The
162 cumulative amount of water supplied per plant during the study was 572 L. Soil volumetric
163 water content (VWV, %) was measured every 2 weeks using a 70-cm frequency domain
164 reflectometry probe (Diviner 2000, Sentek Sensor Technologies Stepney, Australia). The
165 accession tube was inserted before planting of seedlings, and soil moisture was measured at 10-
166 cm intervals. For simplicity, we performed data analysis using soil VWC for the depth intervals

167 of 0-20, 20-40 and 40-70 cm. Mean VWC increased with depth and was higher in mountain
168 and boreal pines than in Mediterranean pines (Figure S1). In general, soil VWC decreased
169 slightly over time in the depth layers of 20-40 and 40-70 cm, whereas it fluctuated without any
170 clear pattern in the 0-20 cm layer.

171 Air temperature was measured daily using electronic sensors (PASSRHT, Decagon
172 Devices, Washington, USA) placed next to the rhizotrons. Mean air temperature during the
173 study was 16.6 °C, fluctuating between 30.3 °C in mid-August 2012 and 3.2 °C in early
174 December 2012 (Figure S2). The lowest air temperature was -2.6 °C in late February 2013; the
175 highest temperature was 40.9 °C in late July 2012.

176 **2.2 Root and shoot measurements**

177 Root elongation measurement was initiated after seedlings were established in early October
178 2012 and were taken every two weeks until May 2014. The length of the visible roots growing
179 against the rhizotron wall was measured in four soil layers, each of which was 20-40 cm thick:
180 these layers covered depths of 0-20, 20-40, 40-80, and 80-110 cm. These layers were
181 photographed with a digital camera, and root length was determined using WinRHIZO (Regent
182 Instruments, Canada).

183 At the end of the experiment in early June 2014, plants were extracted from the
184 rhizotrons by gently removing the growing medium with water. Plants were separated into
185 shoots and roots and washed with tap water. The roots were cut at three depth layers (0-40, 40-
186 80 and 80-120 cm), scanned and their length quantified using WinRHIZO. Then all plant
187 fractions were dried at 60 °C until constant weight. SRL was calculated as the ratio between
188 total root length and total root mass, while R/S was calculated by dividing root mass by shoot
189 mass.

190 Shoot growth was monitored by periodically measuring stem height and diameter,
191 which was measured at 1 cm from the ground. Both measurements were performed at planting

192 and on the following days after transplanting: 336 (18 June 2013), 456 (16 October 2013), 545
193 (13 January 2014), 618 (26 March 2014) and 686 (02 June 2014). We also used the relative
194 growth rate (RGR) as a surrogate of plant growth. RGR was calculated as:

$$195 \quad RGR = \frac{\ln(m_{t2}) - \ln(m_{t1})}{t2 - t1}$$

196 where m is the plant mass at the time of transplantation into the rhizotron ($t1$) and at the end of
197 the experiment ($t2$). The mass at $t1$ was measured on 10 seedlings per species randomly sampled
198 after drying at 60 °C for 48 h.

199 **2.3 Data analysis**

200 Differences in height and diameter growth rates between species were assessed using a linear
201 mixed model in which the random effect was individuals and the fixed effect was the interaction
202 between species factor and the covariate time (days since planting). Significant differences
203 ($P < 0.05$) in the model slope meant that growth rates were different among species.

204 The effect of species on root and shoot measurements after harvesting were analyzed
205 using one-way ANOVA. The response variables were shoot mass, total root mass, total root
206 length, R/S, and SRL. We also evaluated the effect of species on the total root mass, and on the
207 root mass proportion at the three different soil layers (0-40, 40-80 and 80-120 cm). Significant
208 differences between species were evaluated using a Tukey HSD test ($P < 0.05$).

209 Root elongation rate was analyzed using a Generalized Additive Mixed Model
210 (GAMM) in which the random factor was individuals, the smoothed term was time (days since
211 planting), and the fixed effect was species. We fitted four different GAMM models, one for
212 each soil layer. To evaluate whether species had a significant effect on root elongation, we
213 compared the model with a model in which species was omitted. If the difference between the
214 two models was ≤ 2 in the corrected Akaike's information criterion (AICc), then the simpler
215 model was selected (Burnham and Anderson 2002).

216 We also analyzed the effect of air temperature on species root growth. For this, root
217 length of all soil layers was added up to yield the total root length per seedling and measurement
218 date. Then, we calculated root length increment (mm day^{-1}) as the difference in root length
219 between two consecutive measurement dates divided by the number of days between both
220 measurements. As the magnitude of root length increment greatly differs among species, it was
221 species-scaled to 0-1 values (hereafter RLI). We used a linear mixed model to evaluate whether
222 the relationship between RLI and temperature was species idiosyncratic. This model included
223 the interaction between species and temperature as fixed effect, and each individual as random
224 term. First, we compared -based on the AICc- this model with a model in which temperature
225 was considered as a second order polynomial. The selected model in this step was then
226 compared with a model in which species factor was dropped.

227 To assess whether species influenced root growth speed through depth, we quantified
228 the time taken by each individual to reach a depth of 40 cm after transplanting into the
229 rhizotrons. We considered that the roots of an individual reached a depth of 40 cm when the
230 roots became visible in the layer at a depth of 40-50 cm. Data were analyzed using one-way
231 ANOVA in which the response variable was the time taken by roots to reach a depth of 40 cm.

232 We used linear regression to analyze whether inter-species differences in root properties
233 were related to climatic conditions normally encountered by the species in their distribution
234 range in the Iberian Peninsula. We used distribution data for continental Spain from the third
235 Spanish Forest Inventory, which analyzed adults and saplings of all woody species in plots
236 distributed over forest ecosystems according to a 1- km^2 grid. We selected those plots classified
237 as natural pine forests based on the Spanish Regions of Provenance (Ruiz-Benito et al. 2012).
238 Then we selected the plots showing saplings for each studied pine species. Climatic variables
239 were calculated from a map with 1- km^2 spatial resolution (Gonzalo 2008) for each species, we
240 chose the 2.5% percentile values for mean annual precipitation. This value represents the mean

241 annual rainfall in the 2.5% most arid locations in the range of each species. All statistical
242 analyses were performed using R 3.2.5.

243

244 3. Results

245 3.1 Aboveground growth

246 At the end of the experiment on day 728 after planting, *P. halepensis*, *P. pinea* and *P. pinaster*
247 showed greater shoot mass than *P. nigra* and *P. sylvestris* (Figure S3). We found a significant
248 interaction between species and time (days since planting) on seedling stem height and diameter
249 (both $P < 0.001$). *Pinus halepensis* showed a significantly larger diameter and faster height
250 growth (higher interaction slope) than the other pine species, whereas *P. sylvestris* showed the
251 slowest growth (Figure S4). *Pinus pinaster* showed faster height growth than *P. pinea*, *P. nigra*
252 and *P. sylvestris*, while no significant differences were found between *P. nigra* and *P. pinea*.
253 Similarly, no significant differences in diameter growth rate were observed among *P. pinea*, *P.*
254 *pinaster* and *P. nigra*. *P. halepensis* also showed the highest RGR and *P. nigra* and *P. sylvestris*
255 showed the lowest RGR, while *P. pinea* and *P. pinaster* had similar RGR (Figure S5).

256 3.2 Belowground growth

257 At the end of the experiment, *P. halepensis*, *P. pinea* and *P. pinaster* showed greater root mass
258 than *P. nigra* and *P. sylvestris* (Figure 1a). However, species did not significantly differ in R/S.
259 Root mass varied with depth in the same way that total root mass did (Figure 1). *Pinus nigra*
260 and *P. sylvestris* showed the smallest root mass at all depths. However, the distribution of root
261 mass with depth did not differ between species. Differences among species affected the mass
262 of roots produced in the soil profile but not the relative distribution of root mass with depth.
263 Total root length showed a similar pattern as root mass. *Pinus halepensis* and *P. pinaster* had
264 longer roots than *P. nigra* and *P. sylvestris*; the latter two species had roots of similar length

265 (Figure 2a). Species SRL showed the opposite trend as root length and mass, with *P. sylvestris*
266 showing the largest SRL and *P. halepensis* the smallest (Figure 2b).
267 Root length increased over time to different extents among the various Iberian pine species
268 (Figure 3, Table S2). *Pinus halepensis* showed the greatest capacity to quickly colonize soil
269 layers (Figure 3), especially the layer at 0-20 cm, followed by *P. pinaster* and *P. pinea*. In
270 general, these three species showed the greatest root length increase in each soil layer, whereas
271 *P. sylvestris* showed the smallest and slowest increase in root length (Figure 3). Root length in
272 *P. nigra* increased more than in *P. sylvestris* but less than in Mediterranean pines except in the
273 0-20-cm layer, where *P. nigra* showed the lowest increase in root length of all five pine species.
274 From day 385 onwards, *P. pinea* showed the longest roots in the layers at depths of 20-40 and
275 40-80 cm. Roots of *P. nigra* and *P. sylvestris* lengthened more slowly towards the end of the
276 experiment than initially, except for soil layer at a depth of 80-110 cm, where growth remained
277 active (Figure 3). The Mediterranean pines, in contrast, showed active growth across all the soil
278 depth layers. Roots lengthened at similar rates across all species in the soil layer at 80-110 cm
279 (Table S2).

280 Scaled root length increment (RLI) showed a quadratic and idiosyncratic species
281 response to temperature (Table S3). RLI monotonically increased in *P. nigra* and *P. sylvestris*
282 (Figure 4). *P. pinaster* and *P. pinea* showed a similar response to mountain pines but reaching
283 constant values around 20°C. On the contrary, *P. halepensis* showed maximum RLI values at
284 low temperatures and then decreased with temperature (Figure 4). RLI values at 7°C was highest
285 in *P. halepensis* (0.18 ± 0.03) followed by *P. pinea* and *P. pinaster* (0.04 ± 0.03 , for both
286 species). *P. sylvestris* and *P. nigra* showed the lowest scaled RLI values (0.02 ± 0.03 and 0.01
287 ± 0.03 , respectively).

288 Species differed in how long roots needed to reach a depth of 40 cm ($F=3.21$, $P=0.034$)
289 according to the trend: *P. halepensis* < *P. pinea* and *P. pinaster* < *P. nigra* (150 days after *P.*
290 *halepensis*) < *P. sylvestris* (180 days after *P. halepensis*) (Figure 5).

291 **3.3 Relationship between root characteristics and rainfall in the distribution range**

292 Root mass at the end of the experiment and the stem diameter growth rate of each species
293 correlated negatively with the 2.5% smallest annual precipitation in the natural range of that
294 species (Figure 6). In contrast, SRL and the time for roots to reach a depth of 40 cm correlated
295 positively with the 2.5% smallest annual rainfall in the natural range (Figure 6).

296

297 **4. Discussion**

298 Juveniles of pine species differ in how rapidly they grow during establishment and consequently
299 in the final size of their root systems and shoots. Interestingly, root differences among species
300 correlate strongly with the precipitation in the driest areas of the species range. In accordance
301 with our hypothesis, seedlings of the Mediterranean pine species, which are exposed to high
302 drought stress in their range (especially *P. halepensis*), show greater ability to rapidly colonize
303 the soil profile and produce larger root systems than the seedlings of the mountain and the
304 boreo-alpine pines under typical lowland Mediterranean conditions. These root differences may
305 drive drought survival (Grossnickle 2005; Padilla and Pugnaire 2007; Villar-Salvador et al.
306 2012). Consistent with this suggestion, survival and growth of *P. nigra* and *P. sylvestris* was
307 significantly lower than *P. halepensis* survival in a common garden experiment in a dry hot
308 Mediterranean location (Salazar-Tortosa et al. 2017; Salazar-Tortosa et al. 2018). Therefore,
309 this study provides new insights into the functional basis of the latitudinal and altitudinal spatial
310 segregation of pines in southern Europe. However, low field survival and growth of mountain
311 and boreo-alpine pines might be also explained by poor physiological performance under water
312 stress conditions (Salazar-Tortosa et al. 2017; Salazar-Tortosa et al. 2018). In addition, the use

313 of one provenance per species requires some caution when generalizing our results. Because
314 we used provenances from the southern dry edge of the range of the mountain and boreo-alpine
315 species, which are more drought resistant than northern and mesic provenances (Richter et al.
316 2012; Matías et al. 2014), it is unlikely that the lower growth of these pine species compared to
317 the Mediterranean pines is biased by provenances selection. Future studies, however, should
318 evaluate provenances differences in root growth.

319 In water-limited ecosystems, seedling mortality due to water stress during the first dry
320 season is a bottleneck for forest regeneration (Castro et al. 2004; Pulido et al. 2010). Resistance
321 of seedlings to drought relies on adaptations that increase water uptake and/or reduce water
322 loss during dry periods (De Micco and Aronne 2012; Brunner et al. 2015). In the present study,
323 Mediterranean pines colonized through soil depth more rapidly, as evidenced by shorter time
324 to reach a depth of 40 cm (Figure 5) and showed the fastest aboveground growth, growing larger
325 than mountain pines at the end of the experiment. This indicates that seedling establishment
326 under Mediterranean climate conditions depends on how rapidly the root system colonizes the
327 soil profile. Similar to our findings, Climent et al. (2011) observed that *P. pinaster*, *P. pinea*
328 and *P. halepensis* grew faster than *P. nigra* and *P. sylvestris* after 32 weeks of growth in 7-L
329 containers. Higher shoot growth rate leads to greater foliage biomass and higher photosynthesis
330 (Cuesta et al. 2010). This greater C assimilation will support the growth of new organs during
331 the wet season, triggering a positive feedback loop in which shoot and root growth support each
332 other (Burdett 1990; Villar-Salvador et al. 2012). In addition, Mediterranean pines, especially
333 *P. halepensis* achieved maximum root growth potential at lower air temperature than mountain
334 and boreo-alpine pines (Figure 4). Maximizing root elongation during the cool and wet season
335 can facilitate seedling establishment before the summer drought, the most limiting season for
336 seedling life in Mediterranean climates (Castro et al. 2004; Pulido et al. 2010). Mediterranean
337 pines were also able to grow faster despite they reduced soil moisture more than the mountain

338 and boreo-alpine pines (Figure S1). Taken all together, our results indicate that Mediterranean
339 pines avoid summer drought maximizing their growth during the wet and cool season, accessing
340 rapidly deep water reserves and exploring a large soil volume (Jackson et al. 1996; Schulze et
341 al. 1996; Padilla and Pugnaire 2007). We suspect that these pines also avoid drought because
342 of early emergence: they disperse seeds in the summer and most seedlings emerge in autumn
343 (Calama et al. 2017). This early emergence in the wet season, together with fast growth and
344 higher root growth under cool air conditions, likely facilitates seedling establishment long
345 before the onset of summer drought. In contrast, the two mountain pine species in our study
346 disperse seeds in winter, and seedlings emerge in spring (Castro 2006; Tíscar and Linares 2011).
347 This later emergence in the wet season, together with lower growth capacity, results in less root
348 growth prior to summer drought and therefore greater seedling vulnerability to water stress
349 (Castro 2006; De Luis et al. 2008).

350 Mediterranean pines showed shorter SRL than mountain pines. In other words, the
351 mountain and boreo-alpine pines grew longer roots per root mass unit invested, which does not
352 support our initial hypothesis. Körner and Renhardt (1987) reported that that perennial herb
353 species that grow at low altitude had thicker fine roots and lower SRL than perennial herbs
354 species inhabiting at high altitude location. Differences in SRL allows for coping with changes
355 in soil resources. SRL variability reflects a trade-off between stress tolerance and resource
356 exploitation (Comas and Eissenstat 2004; de la Riva et al. 2017): fast growing species, which
357 usually thrive in rich resource environments, are expected to have higher SRL, whereas slow
358 growing, stress-tolerant species are expected to have lower SRL. However, whether root traits
359 are primarily aligned along the acquisition-conservation axis is under debate (de la Riva et al.
360 2016; Kramer-Walter et al. 2016; de la Riva et al. 2017). Our data show that although
361 Mediterranean pines inhabit drier locations they have lower SRL but higher growth rates than
362 mountain and boreo-alpine pines. The high SRL in mountain and boreo-alpine pines is

363 consistent with the idea from recent global reviews that plants inhabiting low-temperature
364 ecosystems tend to have higher SRL (Freschet et al. 2017; Valverde-Barrantes et al. 2017).
365 High SRL in cold-climate plants may be an adaptation to enhance soil nutrient exploitation,
366 counteracting the negative effects of low temperature on organic matter mineralization (Comas
367 et al. 2012).

368 Plants can also maintain their water status through increased biomass allocation to roots
369 (Grossnickle 2005; Brunner et al. 2015). However, we found no significant R/S differences
370 among species, suggesting a conservative pattern in the allocation of biomass among pine
371 species. These results contrast with previous reports of higher R/S in *P. nigra* and *P. sylvestris*
372 than in our Mediterranean pines (Climent et al. 2011; Matías et al. 2017). Differences between
373 our study and previous ones may reflect that our study used a much larger rooting volume
374 (Poorter et al. 2012a): in our study it was 360L, compared to 7L in Climent et al. (2011) or 2.5L
375 in Matías et al. (2017). Similarly, our data showed no inter-species differences in the
376 distribution of root mass through depth, in contrast to quantitative reviews and experimental
377 studies showing that tree species adapted to dry conditions generally invest more root mass in
378 depth than species inhabiting mesic environments (Schenk and Jackson 2002; Mokany et al.
379 2006; Markesteijn and Poorter 2009; Poorter et al. 2012b). It is possible that root depth and root
380 system size are more important than R/S for survival under dry conditions (Padilla and Pugnaire
381 2007). Plants can also respond to water stress by constructing root systems with a larger taproot
382 and increasing the allocation of biomass to coarse roots at the expenses of fine roots. It is also
383 possible that our results are phylogenetically biased: the species in our study belong to the same
384 genus, and morphological root traits are phylogenetically structured (Valverde-Barrantes et al.
385 2017). Indeed, *Pinus* species show a strong phylogenetic signal in some functional traits (He et
386 al. 2012) and mass allocation may also have evolved conservatively.

387 In conclusion, seedlings of southern Europe pines differ in how rapidly they grow and
388 colonize the soil profile, and the sensitivity of root growth to low temperature. Mediterranean
389 pines showed faster growth rates, larger root systems, faster rooting through the soil depth and
390 at lower temperature and soil moisture than mountain and boreo-alpine pines under lowland
391 Mediterranean conditions. These differences related to the aridity to which the species are
392 normally exposed in their range. SRL was higher in mountain and boreo-alpine pines than in
393 Mediterranean pines. The distribution of root mass through soil depth and the ratio of mass
394 allocation to roots and shoots did not differ among pines. Our results suggest that differences
395 in growth rate play an important role in determining the capacity of pine species to colonize dry
396 Mediterranean locations. However, other functional attributes related to plant's water economy
397 and tolerance to high temperatures might also contribute to explain pine species distribution
398 and should be addressed in future studies. Climate change projections for southern Europe
399 predict an increase in aridity over the next century (Christensen and Christensen 2007), which
400 can potentially trigger shifts in the tree species distribution. Based on our results, the higher
401 growth capacity of Mediterranean pines may allow the colonization of zones at higher altitude
402 and thereby displace mountain pines, which are also more vulnerable to warming and drought
403 (Matías et al. 2017; Salazar-Tortosa et al. 2018).

404

405 **5. References**

- 406 Alía Miranda R, García del Barrio, J.M. Iglesias Sauce S, Mancha Núñez JA, de Miguel y del
407 Ánge, I J. Nicolás Peragón JL, Pérez Martín F, Sánchez de Ron D (2009) Regiones de
408 procedencia de especies forestales españolas. Organismo Autónomo de Parques
409 Nacionales, Madrid, Spain.
- 410 Alsina MM, Smart DR, Bauerle T, De Herralde F, Biel C, Stockert C, Negrón C, Save R
411 (2011) Seasonal changes of whole root system conductance by a drought-tolerant grape

412 root system. *J Exp Bot* 62:99–109 . doi: 10.1093/jxb/erq247

413 Alvarez-Uria P, Körner C (2007) Low temperature limits of root growth in deciduous and
414 evergreen temperate tree species. *Funct Ecol* 21:211–218

415 Barbero M, Loisel R, Quezel P, Richardson DM, Romane F, Barbéro M, Loisel P, Quézel P,
416 Richardson DM, Romane F (1998) Pines of the Mediterranean Basin. In: Richardson
417 DM (ed) *Ecology and biogeography of Pinus*. Cambridge University Press, Cambridge,
418 pp 153–170

419 Blanco E, Casado MA, Costa M, Escribano R, García M, Génova M, Gómez A, Gómez F,
420 Moreno JC, Morla C, Regato P, Sainz H (1998) *Los bosques Ibéricos. Una interpretación*
421 *geobotánica* . Editorial Planeta S.A., Barcelona

422 Brodribb TJ, McAdam SAM, Jordan GJ, Martins SC V (2014) Conifer species adapt to low-
423 rainfall climates by following one of two divergent pathways. *Proc Natl Acad Sci U S A*
424 111:14489–93 . doi: 10.1073/pnas.1407930111

425 Brum M, Teodoro GS, Abrahão A, Oliveira RS (2017) Coordination of rooting depth and leaf
426 hydraulic traits defines drought-related strategies in the campos rupestres, a tropical
427 montane biodiversity hotspot. *Plant Soil*. doi: 10.1007/s11104-017-3330-x

428 Brunner I, Herzog C, Dawes MA, Arend M, Sperisen C (2015) How tree roots respond to
429 drought. *Front Plant Sci* 6:1–16 . doi: 10.3389/fpls.2015.00547

430 Burdett AN (1990) Physiological processes in plantation establishment and the development
431 of specifications for forest planting stock. *Can J For Res* 20:415–427

432 Burnham KP, Anderson DR (2002) *Model Selection and Multimodel Inference: a Practical*
433 *Information-theoretic Approach*

434 Calama R, Manso R, Lucas-Borja ME, Espelta JM, Piqué M, Bravo F, del Peso C, Pardos M
435 (2017) Natural regeneration in iberian pines: A review of dynamic processes and
436 proposals for management. *For. Syst.* 26

437 Canadell J, Jackson R, Ehleringer J, Mooney HA, Sala OE, Schulze E-D (1996) Maximum
438 rooting depth of vegetation types at the global scale. *Oecologia* 108:583–595 . doi:
439 10.1007/BF00329030

440 Castro J (2006) Short delay in timing of emergence determines establishment success in *Pinus*
441 *sylvestris* across microhabitats. *Ann Bot* 98:1233–1240 . doi: 10.1093/aob/mcl208

442 Castro J, Zamora R, Hódar JA, Gómez JM (2004) Seedling establishment of a boreal tree
443 species (*Pinus sylvestris*) at its southernmost distribution limit: consequences of being in
444 a marginal Mediterranean habitat. *J Ecol* 92:266–277 . doi: 10.1111/j.0022-
445 0477.2004.00870.x

446 Chaves MM, Maroco JP, Pereira JS (2003) Understanding plant responses to drought—from
447 genes to the whole plant. *Funct Plant Biol* 30:239–264.

448 Christensen JH, Christensen OB (2007) A summary of the PRUDENCE model projections of
449 changes in European climate by the end of this century. *Clim. Change* 81:7–30

450 Climent J, Costa e Silva F, Chambel MR, Pardos M, Almeida MH (2009) Freezing injury in
451 primary and secondary needles of Mediterranean pine species of contrasting ecological
452 niches. *Ann For Sci* 66:407–407 . doi: 10.1051/forest/2009016

453 Climent J, San-Martín R, Chambel MR, Mutke S (2011) Ontogenetic differentiation between
454 Mediterranean and Eurasian pines (sect. *Pinus*) at the seedling stage. *Trees - Struct Funct*
455 25:175–186 . doi: 10.1007/s00468-010-0496-8

456 Comas LH, Becker SR, Cruz VM V., Byrne PF, Dierig DA (2013) Root traits contributing to
457 plant productivity under drought. *Front Plant Sci* 4:442 . doi: 10.3389/fpls.2013.00442

458 Comas LH, Eissenstat DM (2004) Linking fine root traits to maximum tree species rate
459 among 11 mature temperate. *Funct Ecol* 18:388–397

460 Comas LH, Mueller KE, Taylor LL, Midford PE, Callahan HS, Beerling DJ (2012)
461 Evolutionary patterns and biogeochemical significance of angiosperm root traits. *Int J*

462 Plant Sci 173:584–595 . doi: 10.1086/665823

463 Cuesta B, Villar-Salvador P, Puértolas J, Jacobs DF, Rey Benayas JM (2010) Why do large,
464 nitrogen rich seedlings better resist stressful transplanting conditions? A physiological
465 analysis in two functionally contrasting Mediterranean forest species. For Ecol Manage
466 260:71–78 . doi: 10.1016/j.foreco.2010.04.002

467 De Herralde F, Savé R, Aranda X, Biel C (2010) Grapevine roots and soil environment:
468 Growth, distribution and function. In: Methodologies and Results in Grapevine
469 Research. Springer Netherlands, Dordrecht, pp 1–20

470 de la Riva EG, Marañón T, Pérez-Ramos IM, Olmo M, Villar R (2017) Plant and Soil Root
471 traits across environmental gradients in Mediterranean woody communities : are they
472 aligned along a single acquisition-conservation axis ? Plant Soil in press: . doi:
473 10.1007/s11104-017-3433-4

474 de la Riva EG, Tosto A, Pérez-Ramos IM, Navarro-Fernández CM, Olmo M, Anten NPR,
475 Marañón T, Villar R (2016) A plant economics spectrum in Mediterranean forests along
476 environmental gradients: Is there coordination among leaf, stem and root traits? J Veg
477 Sci 27:187–199 . doi: 10.1111/jvs.12341

478 De Luis M, Verdú M, Raventós J (2008) Early to rise makes a plant healthy, wealthy, and
479 wise. Ecology 89:3061–3071

480 De Micco V, Aronne G (2012) Morpho-anatomical traits for plant adaptation to drought. In:
481 Aroca R (ed) Plant responses to drought stress: From morphological to molecular
482 features. Springer-Verlag Berlin Heidelberg

483 Fernández L, Villar-Salvador P, Martínez-Vilalta J, Toca AO, Zavala MA (2017) Distribution
484 of pines in Europe agrees with seedling differences in foliage frost tolerance, not with
485 xylem embolism vulnerability. Tree Physiol in press:

486 Freschet GT, Valverde-Barrantes OJ, Tucker CM, Craine JM, McCormack ML, Violle C,

487 Fort F, Blackwood CB, Urban-Mead KR, Iversen CM, Bonis A, Comas LH, Cornelissen
488 JHC, Dong M, Guo D, Hobbie SE, Holdaway RJ, Kembel SW, Makita N, Onipchenko
489 VG, Picon-Cochard C, Reich PB, de la Riva EG, Smith SW, Soudzilovskaia NA,
490 Tjoelker MG, Wardle DA, Roumet C (2017) Climate, soil and plant functional types as
491 drivers of global fine-root trait variation. *J Ecol* 105:1182–1196 . doi: 10.1111/1365-
492 2745.12769

493 Gonzalo J (2008) *Diagnosis fitoclimática de la España peninsular. Actualización y análisis*
494 *geoestadístico aplicado*. Universidad Politécnica de Madrid

495 Grossnickle SC (2012) Why seedlings survive: influence of plant attributes. *New For* 43:711–
496 738

497 Grossnickle SC (2005) Importance of root growth in overcoming planting stress. *New For*
498 30:273–294 . doi: 10.1007/s11056-004-8303-2

499 He T, Pausas JG, Belcher CM, Schwilk DW, Lamont BB (2012) Fire-adapted traits of *Pinus*
500 *arose* in the fiery Cretaceous. *New Phytol* 194:751–759 . doi: 10.1111/j.1469-
501 8137.2012.04079.x

502 Hernández EI, Vilagrosa A, Pausas JG, Bellot J (2010) Morphological traits and water use
503 strategies in seedlings of Mediterranean coexisting species. *Plant Ecol* 207:233–244 .
504 doi: 10.1007/s11258-009-9668-2

505 Holmgren M, López BC, Gutiérrez JR, Squeo FA (2006) Herbivory and plant growth rate
506 determine the success of El Niño Southern Oscillation-driven tree establishment in
507 semiarid South America. *Glob Chang Biol* 12:2263–2271 . doi: 10.1111/j.1365-
508 2486.2006.01261.x

509 Jackson RB, Canadell J, Ehleringer JR, Mooney HA, Sala OE, Schulze ED (1996) A global
510 analysis of root distributions for terrestrial biomes. *Oecologia* 108:389–411 . doi:
511 10.1007/BF00333714

512 Körner CH, Renhardt U (1987) Dry matter partitioning and root length/leaf area ratios in
513 herbaceous perennial plants with diverse altitudinal distribution. *Oecologia* 74:411–418
514 Kramer-Walter KR, Bellingham PJ, Millar TR, Smissen RD, Richardson SJ, Laughlin DC
515 (2016) Root traits are multidimensional: specific root length is independent from root
516 tissue density and the plant economic spectrum. *J Ecol* 104:1299–1310 . doi:
517 10.1111/1365-2745.12562

518 Levitt J (1980) Responses of plants to environmental stresses. Volume II. Water, radiation,
519 salt, and other stresses, 2nd edn. Academic Press, New York

520 Lyr H (1996) Effect of the root temperature on growth parameters of various European tree
521 species. In: *Annales des sciences forestières*. EDP Sciences, pp 317–323

522 Markesteijn L, Poorter L (2009) Seedling root morphology and biomass allocation of 62
523 tropical tree species in relation to drought- and shade-tolerance. *J Ecol* 97:311–325 . doi:
524 10.1111/j.1365-2745.2008.01466.x

525 Matías L, Castro J, Villar-Salvador P, Quero JL, Jump AS (2017) Differential impact of hotter
526 drought on seedling performance of five ecologically distinct pine species. *Plant Ecol*
527 218:201–212 . doi: 10.1007/s11258-016-0677-7

528 Matías L, González-Díaz P, Jump AS (2014) Larger investment in roots in southern range-
529 edge populations of Scots pine is associated with increased growth and seedling
530 resistance to extreme drought in response to simulated climate change. *Environ Exp Bot*
531 105:32–38

532 Mitrakos K (1980) A theory for Mediterranean plant life. *Acta Oecologica Oecologia Plant*
533 1:245–252

534 Mokany K, Raison RJ, Prokushkin AS (2006) Critical analysis of root: Shoot ratios in
535 terrestrial biomes. *Glob Chang Biol* 12:84–96 . doi: 10.1111/j.1365-2486.2005.001043.x

536 Ostonen I, Püttsepp Ü, Biel C, Alberton O, Bakker MR, Lõhmus K, Majdi H, Metcalfe D,

537 Olsthoorn AFM, Pronk A, Vanguelova E, Weih M, Brunner I (2007) Specific root length
538 as an indicator of environmental change. *Plant Biosyst* 141:426–442 . doi:
539 10.1080/11263500701626069

540 Padilla FM, Pugnaire FI (2007) Rooting depth and soil moisture control Mediterranean
541 woody seedling survival during drought. *Funct Ecol* 21:489–495

542 Poorter H, Bühler J, Van Dusschoten D, Climent J, Postma J a. (2012a) Pot size matters: A
543 meta-analysis of the effects of rooting volume on plant growth. *Funct Plant Biol* 39:839–
544 850 . doi: 10.1071/FP12049

545 Poorter H, Niklas KJ, Reich PB, Oleksyn J, Poot P, Mommer L (2012b) Biomass allocation to
546 leaves, stems and roots: meta-analyses of interspecific variation and environmental
547 control. *New Phytol* 193:30–50 . doi: 10.1111/j.1469-8137.2011.03952.x

548 Pregitzer KS, King JS, Burton AJ, Brown SE (2000) Responses of tree fine roots to
549 temperature. *New Phytol* 147:105–115

550 Pulido F, García E, Obrador JJ, Moreno G (2010) Multiple pathways for tree regeneration in
551 anthropogenic savannas: incorporating biotic and abiotic drivers into management
552 schemes. *J Appl Ecol* 47:1272–1281 . doi: 10.1111/j.1365-2664.2010.01865.x

553 Reich PB, Tjoelker MG, Walters MB, Vanderklein DW, Buschena C (1998) Close association
554 of RGR, leaf and root morphology, seed mass and shade tolerance in seedlings of nine
555 boreal tree species grown in high and low light. *Funct Ecol* 12:327–338

556 Richter S, Kipfer T, Wohlgemuth T, Guerrero CC, Ghazoul J, Moser B (2012) Phenotypic
557 plasticity facilitates resistance to climate change in a highly variable environment.
558 *Oecologia* 169:269–279

559 Ruiz-Benito P, Gómez-Aparicio L, Zavala MA (2012) Large-scale assessment of regeneration
560 and diversity in Mediterranean planted pine forests along ecological gradients. *Divers*
561 *Distrib* 18:1092–1106 . doi: 10.1111/j.1472-4642.2012.00901.x

562 Salazar-Tortosa D, Castro J, De Casas RR, Viñegla B, Sánchez-Cañete EP, P. Villar-Salvador
563 P (2017) Gas exchange at whole plant level shows that a less conservative water use is
564 linked to a higher performance in three ecologically distinct pine species. *Environ Res*
565 *Lett* in press:

566 Salazar-Tortosa D, Castro J, Villar-Salvador P, Viñegla B, Matías L, Michelsen A, Rubio de
567 Casas R, Querejeta JI (2018) The “isohydric trap”: A proposed feedback between water
568 shortage, stomatal regulation, and nutrient acquisition drives differential growth and
569 survival of European pines under climatic dryness. *Glob Change Biol*, in press.

570 Schenk HJ, Jackson RB (2002) Rooting depths, lateral root spreads and belowground
571 aboveground allometries of plants in water limited ecosystems. *J Ecol* 480–494 . doi:
572 10.1046/j.1365-2745.2002.00682.x

573 Schulze ED, Mooney HA, Sala OE, Jobbagy E, Buchmann N, Bauer G, Canadell J, Jackson
574 RB, Loreti J, Oesterheld M, Ehleringer JR (1996) Rooting depth, water availability, and
575 vegetation cover along an aridity gradient in Patagonia. *Oecologia* 108:503–511

576 Stella JC, Battles JJ (2010) How do riparian woody seedlings survive seasonal drought?
577 *Oecologia* 164:579–590 . doi: 10.1007/s00442-010-1657-6

578 Tíscar PA, Linares JC (2011) Structure and regeneration patterns of *Pinus nigra* subsp.
579 *Salzmannii* natural forests: A basic knowledge for adaptive management in a changing
580 climate. *Forests* 2:1013–1030 . doi: 10.3390/f2041013

581 Toca AO, Oliet JA, Villar-Salvador P, Maroto J, Jacobs DF (2017) Species ecology
582 determines the role of nitrogen nutrition on the frost tolerance of pine seedlings. *Tree*
583 *Physiol* in press:

584 Valverde-Barrantes OJ, Freschet GT, Roumet C, Blackwood CB (2017) A worldview of root
585 traits: The influence of ancestry, growth form, climate and mycorrhizal association on
586 the functional trait variation of fine-root tissues in seed plants. *New Phytol* 215:1562–

587 1573

588 Vicente-Serrano SM, Gouveia C, Camarero JJ, Begueria S, Trigo R, Lopez-Moreno JI,
589 Azorin-Molina C, Pasho E, Lorenzo-Lacruz J, Revuelto J, Moran-Tejeda E, Sanchez-
590 Lorenzo A (2013) Response of vegetation to drought time-scales across global land
591 biomes. *Proc Natl Acad Sci* 110:52–57 . doi: 10.1073/pnas.1207068110

592 Villar-Salvador P, Puértolas J, Cuesta B, Peñuelas JL, Uscola M, Heredia-Guerrero N, Rey
593 Benayas JM (2012) Increase in size and nitrogen concentration enhances seedling
594 survival in Mediterranean plantations. Insights from an ecophysiological conceptual
595 model of plant survival. *New For* 43:755–770 . doi: 10.1007/s11056-012-9328-6

596
597

Accepted manuscript

598 **Figure legends**

599 **Figure 1:** Root mass of pine species at the end of the experiment over the entire soil depth (a)
600 and in layers at depths of 0-40 cm (b), 40-80 cm (c), and 80-110 cm (d). Boxes show the 95%
601 and 5% percentile values, while the solid line indicates the median. Different letters show
602 significant differences ($p < 0.05$) between pine species.

603 **Figure 2:** Total root length (a) and specific root length (b) of pine species at the end of the
604 experiment. Boxes are the 95% and 5% percentile values, while the solid line indicates the
605 median. Different letters show significant differences ($p < 0.05$) between pine species.

606 **Figure 3:** Root length at different soil depths in pine species. Lines depict the mean values
607 ($n=6$) for each species at each measurement date, while strips represent the SE. The scale of the
608 root length axis differs among panels.

609 **Figure 4:** Relationship of pine species' scaled root length increment with temperature. Points
610 show observed scaled root length increment. Lines depict the predictions of the fitted linear
611 mixed model for each species, while strips represent the SE of these predictions.

612 **Figure 5:** Time needed for roots to reach a depth of 40 cm across pine species. Boxes are the
613 95% and 5% percentile values, while the solid lines indicate the median. Different letters show
614 significant differences ($p < 0.05$) between pine species.

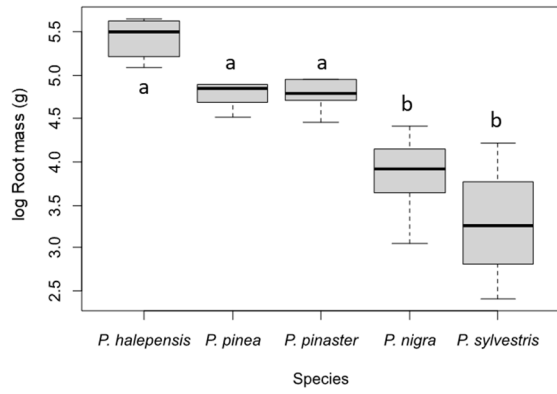
615 **Figure 6:** Relationships of a pine species' root mass at the end of the experiment, shoot diameter
616 growth rate, specific root length (SRL) and time for roots to reach a depth of 40 cm with 2.5%
617 percentile values of annual rainfall in the distribution range of that species. Equations of the
618 adjusted linear models are shown together with r^2 and P values. Each point represents mean
619 values ± 1 SE. Ph=*P.halepensis*, Pa=*P.pinea*, Ppt=*P.pinaster*, Pn=*P.nigra* and Ps=*P.sylvestris*.

620

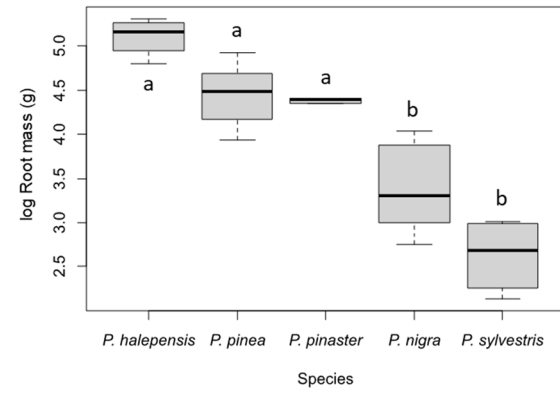
621

622

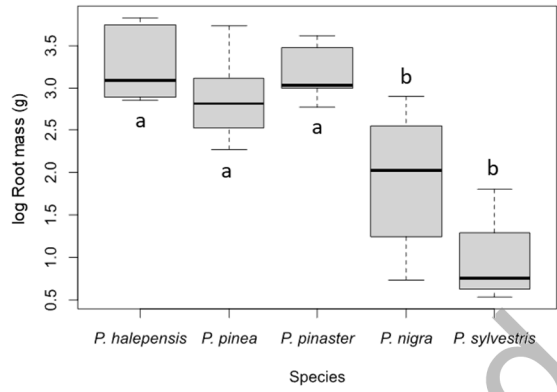
a) Whole profile (0-110 cm depth)



b) 0-40 cm depth



c) 40-80 cm depth



d) 80-110 cm depth

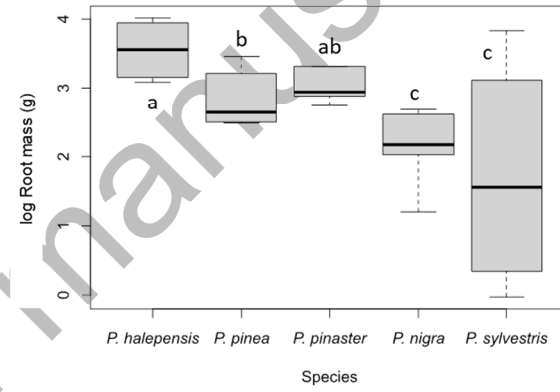
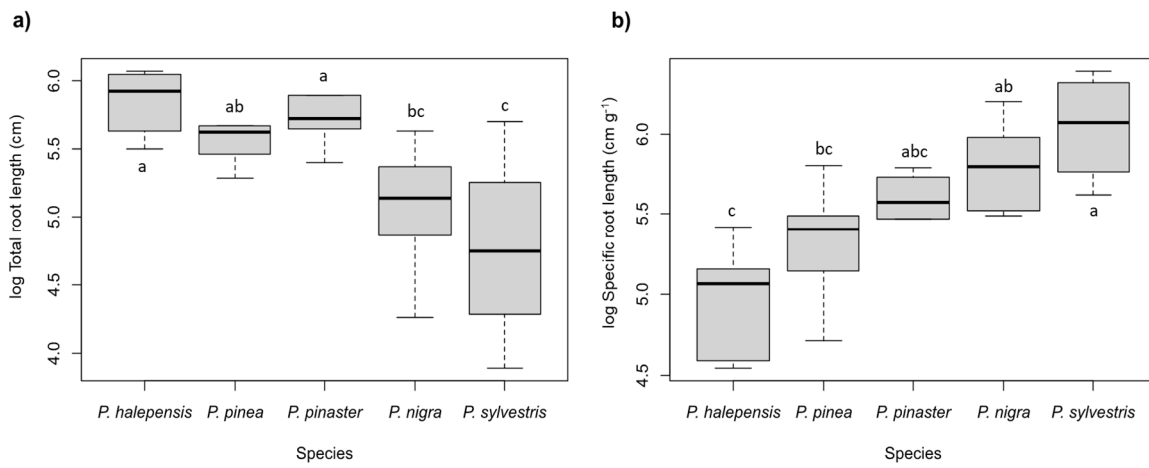


Figure 1

Accepted manuscript

627



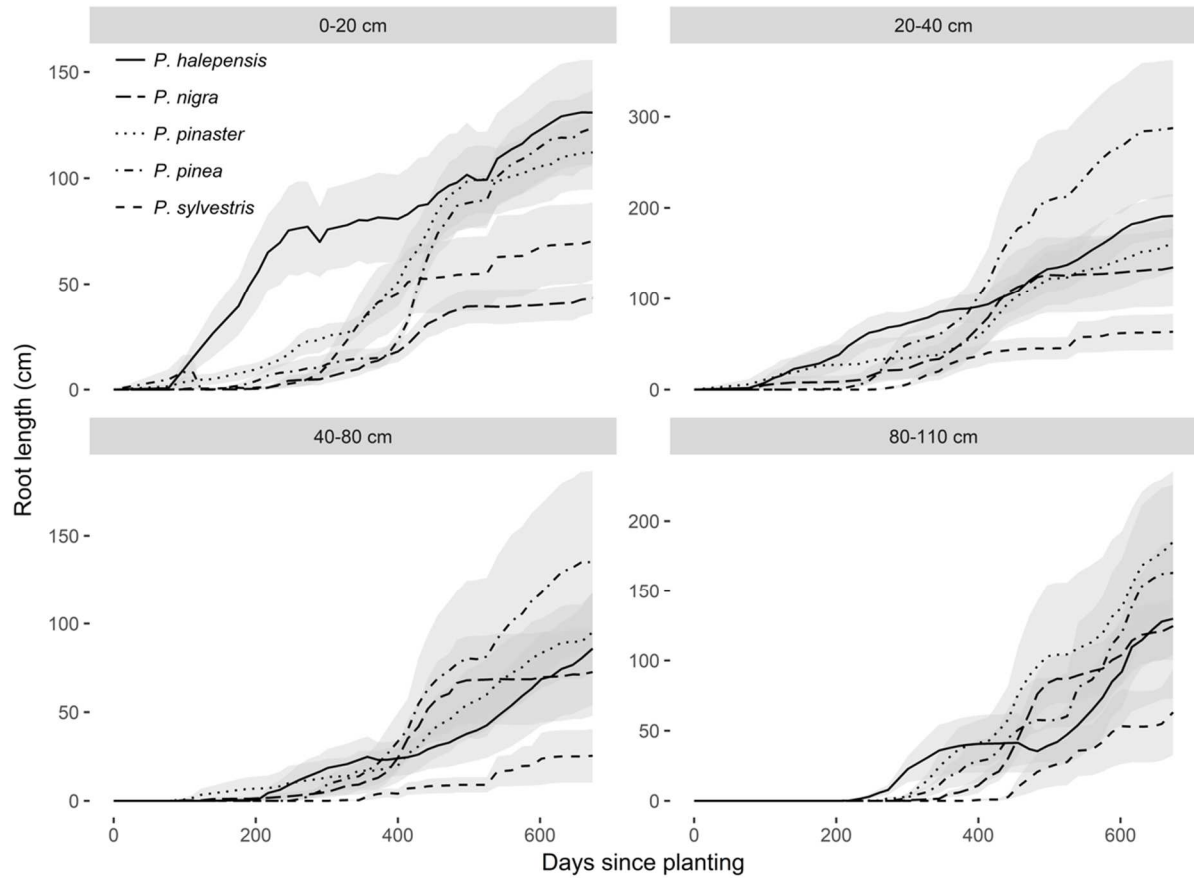
628

629

Figure 2

Accepted manuscript

630



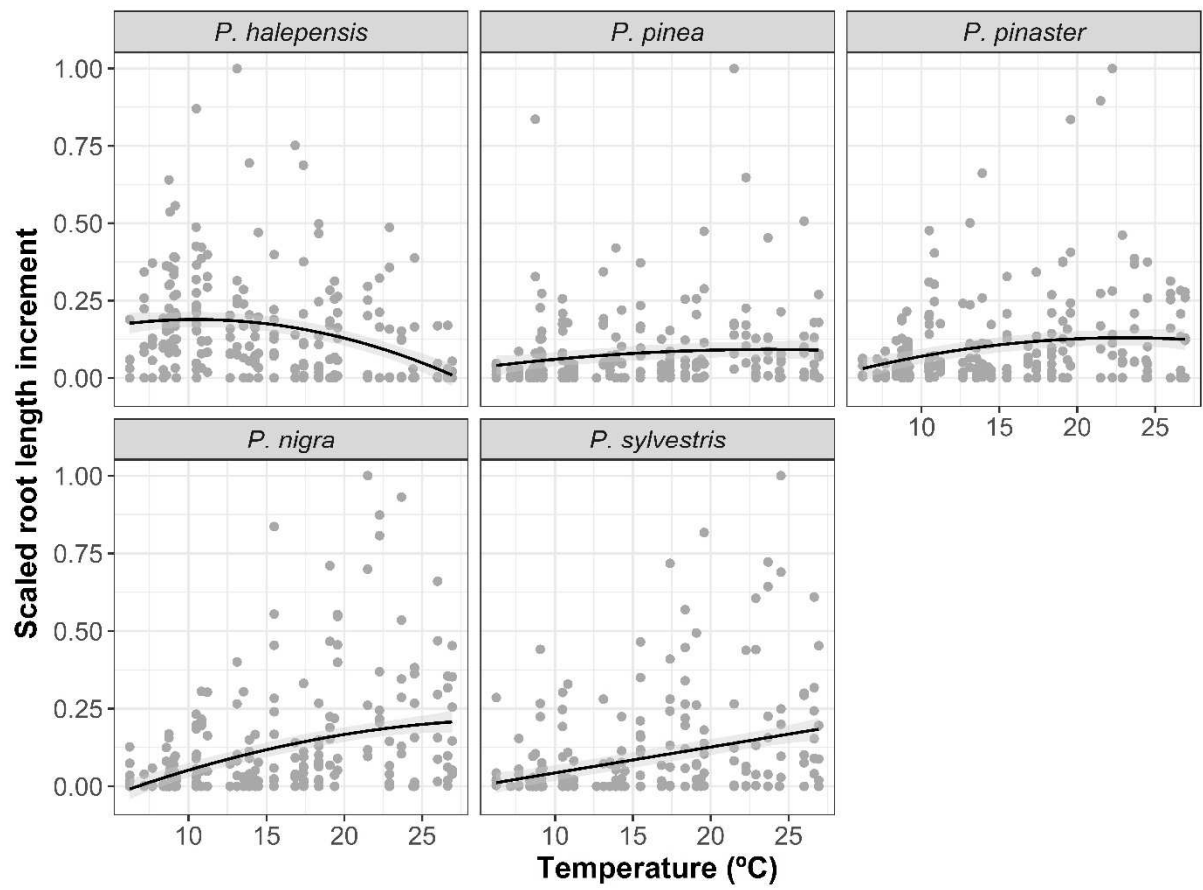
631

632

633

Figure 3

Accepted



634

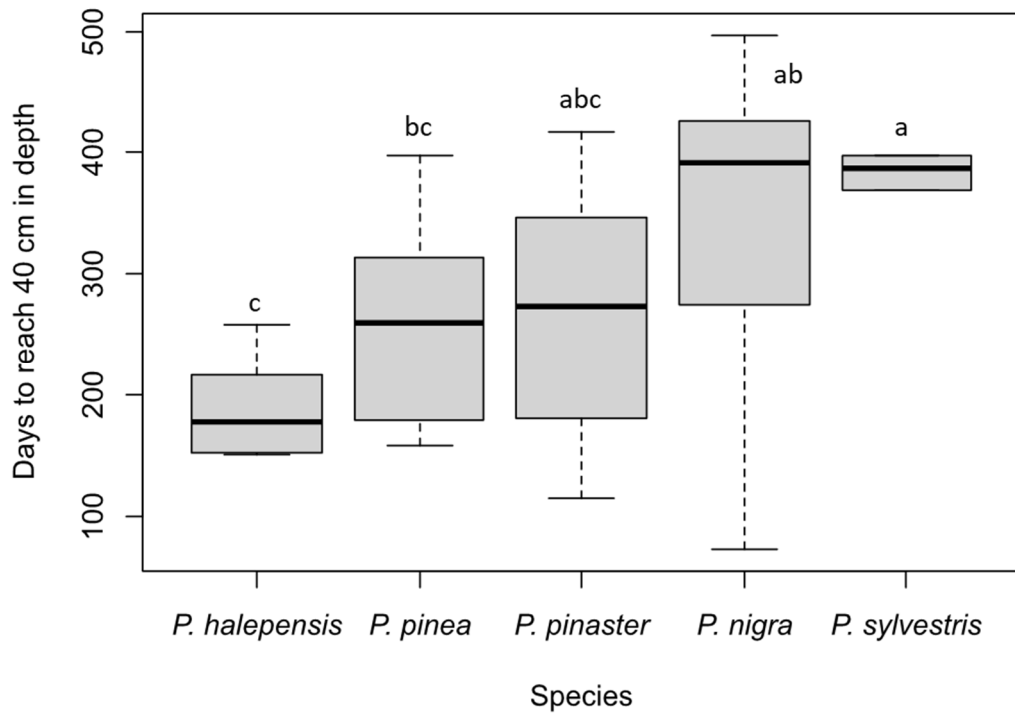
635

636

Figure 4

Accepted

637

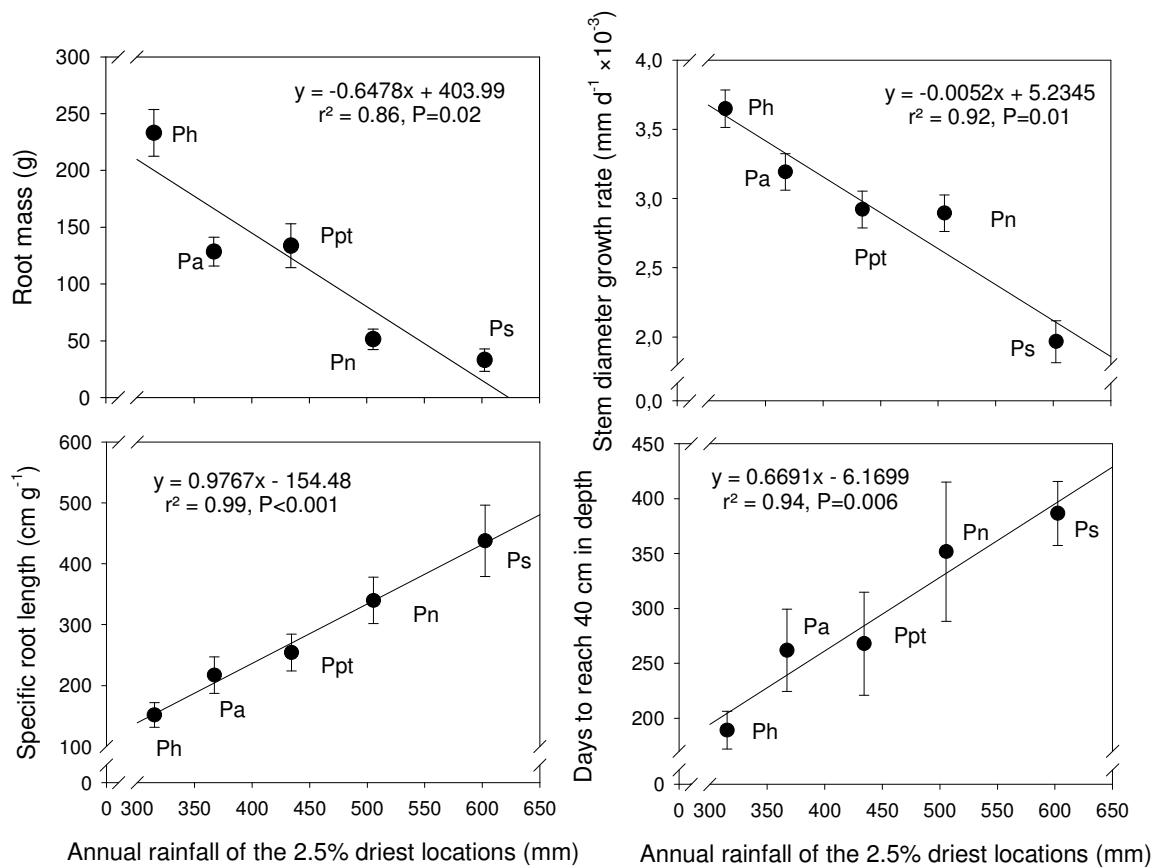


638

639

Figure 5

Accepted manuscript



641

642

Figure 6

Accepted